



Mud flats

ANNUAL REPORT
SUMMER 2024

ELIZABETH RIVER
PROJECT

4610 Colley Ave., Norfolk, VA 23508 | ElizabethRiver.org

Ryan Resilience Lab opens new era for river restoration

Grand opening June 1

Plus Eco-District launch

Festivities summer-long

You've likely seen it rising on North Colley:

Three stories high, ready for sea level rise, ready to welcome you and a new era of regional engagement in restoring the Elizabeth River – while taking into account our changing climate.

On June 1 and all summer, the Elizabeth River Project celebrates the opening of our Ryan Resilience Lab, 4610 Colley Avenue, Norfolk; made possible by generous river lovers like you.

Also launching the EcoDistrict. Businesses and residents of North Colley are joining with the Ryan Lab to clean up Knitting Mill Creek as a model for restoring rivers everywhere. More inside and at Elizabethriver.org/events.



Former First Lady Pam Northam (2nd from right) leads a “sneak peek” tour of the Elizabeth River Project’s Ryan Resilience Lab (below). Join us for opening festivities all summer. We’re proud that Northam, a science educator, has joined our outreach team.



Grand Opening & Much More,
See pull out guide p. 5

Officers – Board of Directors

President | Ken Kimball

Senior Vice-President, Lyon Shipyard

Vice-President | Dr. Javaune Adams-Gaston

President, Norfolk State University

Adjunct Vice-President | Melissa Page Deutsch

Certified Personal Development Coach, Owner, Inner Voice

Treasurer | Dr. Maynard Schaus

Professor of Biology and Environmental Science, Virginia Wesleyan University

Secretary | Louis Ryan

Retired General Counsel, Landmark

Board of Directors

Aimee Batten, Community Leader

Hon. Courtney Doyle, Norfolk City Council, Senior Director

Customer Development and Marketing, Sentara Health

Nikole Dunkley, Vice President Human Resources, Lyon Shipyard

Rodney Ferguson, Executive Vice-President, Headwaters Casino

Matt Fine, President, Runnymede Corp.

Dr. Kala Fleming, CEO, Frontline Gig

Susan Goode, Community Leader

Herb Haneman, President, Lindel Power Group

Josh Harris, Vice President, Wealth Management Advisor,

Merrill Lynch

Burr Henderson, Managing Director, Truist Private Wealth

Hon. Jay Jones, Senior Associate Litigation, Arbitration, and

Employment, Hogan Lovells

Ray W. King, Attorney, Woods Rogers Vandeventer Black, PLC

Mia Lefkowitz Robinson, Project Manager, Flooring Division,

HAPAX

Jeff Merritt, Market Vice-President, Cox Communications

Hon. Delceno Miles, President, CEO, The Miles Agency

Hon. Paula Miller, Legislative Affairs Advisor, External Affairs

Manager and Senior Communications Specialist, Dominion Energy

Kevin Murphy, Owner, Basketball Products International

J. Cameron Robinett, Chief Investment Officer, Cock Island

Capital

Michael A. Unger, Retired Professor, Virginia Institute of Marine

Science, William & Mary

Hon. Dr. Theresa Whibley, Retired Partner at Tidewater

Physicians for Women

David White, Executive Director, Virginia Maritime Association

Staff

Mckenzie Arrington, Restoration Administrative Coordinator

Charlotte Bankowski, Accounting Specialist I

Mary Batterson Stewart, Accounting Specialist II

Mary Bennett, Environmental Scientist

Luisa Black Ellis, Resilience Manager

Pam Boatwright, Deputy Director Administration & River Star

Businesses Program Manager

Yolima Carr, Conservation Landscaping Curator

Austin Connito, Seasonal Landscape Technician

Robin Dunbar, Deputy Director - Education

Victoria Dunch, Resilience Research Coordinator

Barbara Gavin, Environmental Project Manager

Kayla Gradwell, Volunteer & Education Administrative Coordinator

Ashton Holliday-Goulart, Grass Roots Coordinator

Jaye Hughes, Human Resources Manager

Heather Lagueux, Director of Finance

Larry LaPell, Park Operations Manager

Hailey Lauritsen, Environmental Educator

Summer Mace, Assistant Director of Education

Mary Mantey, Landscape Designer

Marjorie Mayfield Jackson, Executive Director

Sarah McBride, School Outreach Coordinator

Jamie Melvin, Engagement Coordinator

Samantha Miller, Environmental Field Foreman

Phoebe Murrell, River Star Homes Program Manager

Pam Northam, Education and Public Relations Associate

Jessica Pinsky, Ryan Resilience Lab Administrator

Katherine Reader, Director of Finance

Joe Rieger, Deputy Director - Restoration

Diego Rosario, After School Program Leader

Joshua Sawyer, Restoration Specialist

Casey E. Shaw, Director of Marketing & Communications

Susan Smith, Director of Development

Tricia Thompson, Educator & Youth Resilience Coordinator

Shannon Yerabek, Learning Barge Education Manager

From the Executive Director



Photo by Eric Lusher

Our first office: One room down a dark hall.

What a contrast. Elizabeth River Project's first office was one room, down a dark hall, next to a private eye in then-ghostly downtown Norfolk.

These 30 years later, my office glimpses Norfolk's Knitting Mill Creek from the lovely perch of the Elizabeth River Project's new Ryan Resilience Lab, built three stories high of the latest in resilience. Below me, two 5,000 gallon cisterns capture the rain to flush the toilets. Down the hall, our soaring Macon and Joan Brock River Room already has welcomed sold-out crowds.

More than anything else, our Ryan Lab is a testament to your belief, key supporter, in the possibility of returning our river to life. When we opened that first office in 1994, many people wouldn't let their kids near the river they'd given up for dead. Now it is almost routine for our members

to send loving photos of the Elizabeth's returning otters, dolphins, pelicans and eagles.

But we're not done together. The Ryan Lab represents our greatest opportunity yet to achieve the larger regional audience she needs for long-term health. The Ryan Lab also offers the world a rare and urgent model for protecting an urban ecosystem as well as its humans as our climate changes.

Let's rise together to meet these greatest challenges and opportunities yet.

Thanks in advance for your returning your special gift with the enclosed card today.

Marjorie Mayfield Jackson

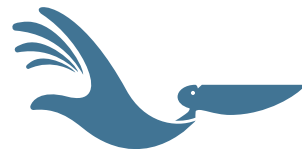


We've Moved!

NEW ADDRESS:

Elizabeth River Project
Ryan Resilience Lab,
4610 Colley Avenue,
Norfolk, VA 23508

*Please make a note of it
and stop by for a tour or
an event soon.*



ELIZABETH RIVER
PROJECT

757-399-7487 | elizabethriver.org

Mission – To restore the Elizabeth River through equitable collaboration with diverse communities, businesses and governments.

JOIN the Elizabeth River Project. Our mission is made possible by generous members like you. *Email Ashton Holliday-Goulart, AHolliday-Goulart@elizabethriver.org, for membership questions.*

Rising together to restore Knitting Mill Creek

Visit these 10 blocks joining us to launch an EcoDistrict

When the Elizabeth River Project's Ryan Resilience Lab officially opens, it won't be the lone business on North Colley Avenue hoping to revitalize the creek that parallels the busy commercial corridor.

Instead, on each side of the Ryan Lab, for a total of more than 10 blocks, businesses as well as residents are joining together with Elizabeth River Project to restore the health of Knitting Mill Creek. Building on existing eco-minded enterprises such as a store that recycles bikes and another selling all native plants, the "EcoDistrict" will launch June 1, in tandem with the public celebration of the Ryan Lab, both from 11 am – 4 pm.

Highlights:

• **Electrified Marina** will give free rides on its electric boats.

• **Hund's Recycle Factory** will offer rides on its recycled bikes and many businesses will participate in a family-oriented scavenger hunt (look in each participating store to find the otter!)

• **Starving Artist Café** is baking otter cookies to reward kids who complete the hunt.

Dubbed the EcoExpedition (Eco-Ex), the event primarily will span 42nd to 52nd streets (parallel to the creek), with the Ryan Lab as the information hub. More: elizabethriver.org/events.



Nicole Knudson (R) welcomes a customer to Lady Fern's Native Plants in the EcoDistrict.

"We are excited to be part of the EcoDistrict from a business and a personal standpoint," Gordon Holley, owner of Westside Produce and Provisions, told participating businesses gathered for a mixer at the Ryan Lab. Holley said he remembers no fishing signs as a child growing up on the river and is grateful to join the momentum for its recovering health.

Holley also hopes North Colley will grow in popularity with the EcoDistrict, while encouraging eco-friendly

practices. Meanwhile Elizabeth River Project is launching a task force to pioneer ways to revitalize a community without unintended consequences such as displacement of residents and businesses if rents increase.

Thank you for making all of our pioneer efforts possible with your membership support. Join or renew your support today. *For more on the EcoDistrict, contact Jamie Melvin, jmelvin@elizabethriver.org.*



Gordon Holley looks forward to introducing more people to his Westside Produce in the new EcoDistrict.

Special Thanks to
EcoDistrict sponsors:

Bank of America



This entire mailing was printed on recycled paper with soy ink



Angelique Thames sighted this river otter on the Indian River branch of the Elizabeth. Learn to record your otter sightings to advance bay science.

How to spot our returning otters - bubbles!

Expert visits to launch community tracking program

Signs to look for: Wide ripples and lots of bubbles. River otters have two coats; the inner keeps them warm. Air bubbles form between the two coats and rise as they swim.

Those are tips for would-be “otter spotters” of the Elizabeth River, told to a sold-out “preview program” March 23 at the Elizabeth River Project’s Ryan Resilience Lab, officially opening June 1. Our guest lecturer: Megan Isadore, here from Marin County, California, where she leads the River Otter Ecology Project.

spottings had been logged on a **special website (elizabethriver.org/community-science)**. Free for residents of the Elizabeth River area, you’re invited to visit and log some of the first data on the lower Chesapeake Bay for river otters.

Megan’s group and another nonprofit, FieldScope, chose the Elizabeth River, along with the Verde River in Arizona, to expand Otter Spotters because of a surge of informal sightings here.

“We know that the waters are pretty good if they’re thriving,” Megan said.

More of Megan’s lessons about our

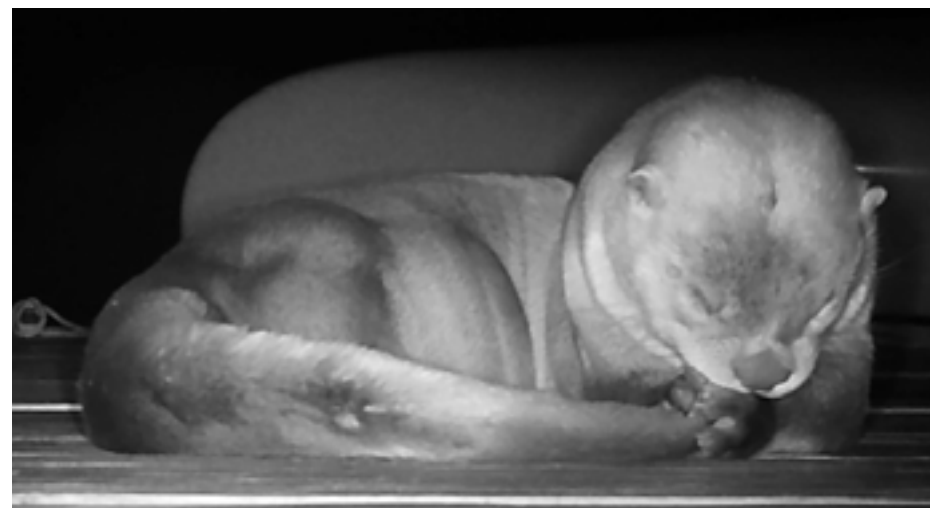
- **The pups are born high above the water.** This is because they can’t swim – the mothers must teach them. “The moms don’t bring their babies out until June or July.”

- **How to tell an otter from a mink, also making a comeback in the Elizabeth?** Minks are chocolate brown, with fluffier tails, and smaller. Otters are a sleek grey-brown, generally weighing 15-20 lbs.

- **How to know if you’re seeing otter “scat,” or droppings?** They love to poop on docks. The poop will probably smell fishy and may have shards of bones and shell (Megan found some like that, on the kayak dock at Plum Point Park).

- **How to tell otter tracks?** It’s hard; Megan recommends tracking books by Mark Elbroch.

Don’t miss “Part 2,” a gathering of otter spotters to report and analyze data. Join us live at the Ryan Lab for an otterly good time with FieldScope’s Jessica Bean, who’ll train us virtually from the West Coast, Thursday, June 20, 5:30-7pm, elizabethriver.org/events. Part 1 not required. *More info: Mary Bennett, mbennett@elizabethriver.org*



By the close of the day, 17 otter sightings had been logged on a special website (elizabethriver.org/community-science). Free for residents of the Elizabeth River area, you’re invited to visit and log some of the first data on the lower Chesapeake Bay for river otters.



ELIZABETH RIVER
PROJECT

Ryan Resilience Lab Grand Opening Celebration

WE’RE OPENING THE DOORS TO
A BRAND NEW ERA OF COASTAL RESILIENCE

SATURDAY, JUNE 1 | 11AM - 4PM
BRIEF GRAND OPENING CEREMONY AT 11:30AM

Join the Elizabeth River Project for the Grand Opening of the new Ryan Resilience Lab and the Norfolk EcoDistrict. Discover how businesses and people are rising together to protect the river – and our coastal way of life – in the age of sea level rise.

Free and open to everyone.

TOUR THE LAB

Built to Flood | Green Roofs
Solar Arrays | Rainwater Capture
Discover Membership and
Volunteer Opportunities and
Other Ways to Get Involved

EXPLORE THE ECODISTRICT

North Colley | 42nd to 52nd+
Learn About the Mission
Support the Shops
Spot Student Otter Art
Inside Participating Businesses
and Win Prizes

JOIN THE FUN

Electric Boat Rides
Kayak Tours
Door Prizes
Food Trucks

4610 Colley Avenue, Norfolk | Rain or Shine
Learn more and register at ElizabethRiver.org



or scan me!

Special thanks to North Colley Business Association, Highland Park & Colonial Place

Pull out and keep this guide for a Riverful Summer!

Join us! Ryan Resilience Series

Art meets science at new Ryan Resilience Lab

Become a “community scientist” when you learn to document your otter sightings or test the water. Or just enjoy the river in new ways such as live cello with shoreside yoga.

Introducing the Elizabeth River Project’s Ryan Resilience Series, made possible by Virginia Natural Gas and taking place at our new Ryan

Resilience Lab. Marrying art and science to inspire hope and action, the series sold out for “preview programs” prior to the coming grand opening.

All summer, we’ve added many new opportunities to join us. See Elizabethriver.org/events.

Here’s a sampling.

Register:



Made possible by
 Virginia Natural Gas

Kids Fishing Day



Saturday, June 8, 11 am – 4 pm.

Ages 5 to 17 | Ryan Resilience Lab | FREE

Brandon Eley (above), founder, Baby Boy Mentoring, will lead volunteers to mentor kids through catch-and-release fishing. Refreshments provided. “My grandma always told me that love fixes that,” he says of violence. “Let’s get back the love, the bonding!” Gear provided.

Business Resilience Series



Solar Workshop for Businesses

Wednesday, June 12, 10:30 am – 12:30 pm.

Ryan Resilience Lab | FREE

Ruth McElroy, solar expert, will guide businesses through the ins and outs of planning and installing solar power at their facilities along with cost-share opportunities.

Trek Towards Zero Waste

Friday, August 16, 11:30 am – 1:30 pm.

Ryan Resilience Lab | \$10 suggested donation

Jeff Merritt, Cox, will be among workshop presenters regarding how to move your business closer to zero waste. Lunch Included.

Riverside Cello Yoga



Saturdays, June 15, July 27, Aug. 17, 8 am – 9 am,

Ryan Resilience Lab | \$20 each (\$15 members)

Live cello by Virginia Symphony’s Rebecca Gilmore will accompany this yoga class on the riverfront.

Native Floral Arranging



Saturday, June 15, 10 – 11 am, Ryan Resilience

Lab | \$50 (\$40 members) Arrange native flowers for a

unique take-home arrangement with urban microfarmer and florist Dee Hall (above). Supplies provided.

Sunset Sip & Paint



Saturday, June 15 – Native flower painting;

Thursdays, July 11, Aug. 8 - eco-crafting.

Sessions are 5-7 pm | \$35 (\$25 members)

Enjoy wine tasting while you create. Studio KUUMBA’s mother-daughter duo, Alora and Rhashida Bess (above), will guide river-inspired creative expression.

Otter Spotter “Watch Party”



Thursday, June 20, 5:30 - 7 pm | Ryan Resilience Lab (optional tour 4:45 pm.) FREE

Gather in person with our staff scientists as national otter experts join us virtually from the West Coast. Fun training on how to document your otter sightings. Trainers: FieldScope’s Jessica Bean and the River Otter Ecology Project’s Megan Isadore.

Solstice Kayak Paddle



Saturday, June 22, 10:30 am - noon | Age 16+

Ryan Resilience Lab \$35 each (\$25 members)

Enjoy the longest day of the year with a paddle to our restoration sites on the Lafayette branch of the Elizabeth.

Chesapeake Water Watch



Volunteer Beth Paquette uses the free smartphone app, HydroColor, to collect turbidity (water clarity) data for the Chesapeake Water Watch project. Credit: Beth Paquette.

Saturday, June 22, 1 - 3:30 pm | Ryan Resilience Lab (optional tour at 12:15 pm) FREE

Simple-to-use scientific equipment and smartphone apps will help you become the first community scientists on the lower bay to gather data to confirm NASA satellite readings about the bay. Training by the Smithsonian Environmental Research Center’s Shelby Brown in cooperation with NASA Citizen Science for Earth Systems. High school age up.

Ryan Lab Open House



Saturday, June 29, 11 am - 2 pm | FREE

Did you miss the grand opening? Stop by to explore the Ryan Resilience Lab and discover ways to get involved. Continual tours, and river story time for the family.

Connecting Diverse Communities in Nature



Manny Almonte won multiple awards for his Wood Hood film on connecting youth of color with the outdoors. Join him for a screening, community discussion and outdoor experiences.

Friday, July 19, 5:30 - 7 pm | Ryan Resilience Lab (optional tour 4:45 pm.) FREE

Wood Hood Screening & Panel: Empowerment through Nature with Manny Almonte and J. D. Weatherspoon of Denver, cofounders, Young Masterminds Initiative. Community discussion with local panelists.



Manny Almonte, winner, National Recreation Foundation achievement prize, is on a mission to connect men and youth of color with the natural world. He will facilitate the Friday panel at the Ryan Lab prior to outdoor experiences the next day at Paradise Creek Nature Park.

Saturday, July 20, 9 am - 1 pm, Paradise Creek Nature Park | FREE - lunch included

Wood Hood screening, kayaking, bird walks, how to set up a tent, plus lunch and round table discussion with Manny Almonte, J.D. Weatherspoon and Elizabeth River Project staff.

Advance tickets required for both events: elizabethriver.org/events

Calling junior scientists!

Learning is fun with these riverful summer experiences



Youth Water Monitoring

Start date: July 20th & continues 8 weeks

Ages: 8-17 | Free | Register:

elizabethriver.org/youth-water-monitoring

Become a junior scientist - collect water quality data to follow the health of our "Liz" (the Elizabeth River). You need access to the river (live nearby or can visit a park, pier, etc). Commit to test the water once a week for 8 weeks. Test kits, detailed instructions available for pick-up at no cost, with training by our educators.

Field trips on the Learning Barge

June 10th - July 26th. | Groups can choose between a 9:30AM or 10:00AM start time.

The program is 1 hour | Ages: 5-17

\$15-\$20 per student (sliding scale)

Register: elizabethriver.org/the-learning-barge

Your group is invited aboard the Elizabeth River Project's Dominion Energy Learning Barge docked at Grandy Village Learning Center for a fun-filled hour. Students conduct water quality tests, make art using river water, and discover what lives in the river with real animal encounters! Up to 50 students at a time.

Junior Ornithology in "Paradise"

Saturday, July 20, 10 am to 11 am | Paradise

Creek Nature Park | Ages: 5-12 | Free

Registration elizabethriver.org

During a 1 mile bird walk, Elizabeth River Project educators will teach youth to identify birds by observation and by listening. Learn bird wings, feathers, beaks and more, and play games to learn how birds feed with different shaped beaks.

All ages: Paddle and more in "Paradise"

All summer long, a special paradise awaits you. Paradise Creek Nature Park is a unique 40 acre urban oasis, made possible by Elizabeth River Project members and the City of Portsmouth. Stroll the two miles of trails to experience beautiful native flowers and towering shade trees. You'll see ongoing projects by our staff and volunteers to add art in the forest while revitalizing the natural landscape. Thank you for making this special site possible with your membership support.

Guided Kayaking Tour

Saturday, June 29, 9 - 10:30 am | Paradise Creek Nature Park | Age: 16 & up (or 12-16 accompanied by adult)

\$25 per person members, \$35 non-members

Paddle Paradise Creek Nature Park's large restored wetland with Elizabeth River Project educators. Kayak, life jacket, paddle provided. Meet by garage or building 15 minutes before start. Bring hat, sunscreen, water bottle.



Riverful Summer Guide

Deepest thanks to our donor circles

The Elizabeth River Project is proud to recognize members of our leadership giving circles. Thank you for contributing \$250 or more annually to support our award-winning restoration and education programs. Join us!

For more information, contact Susan Smith at 757-399-7487 or 757-407-1406 (c) or ssmith@elizabethriver.org.

Contributions received between May 1, 2023 and March 15, 2024



Pelican Circle

\$500,000 and Above - Organizations

The Goode Family Foundation
The Landmark Foundation
National Fish & Wildlife Foundation
Perry Family Foundation
TowneBank Foundation

\$500,000 and Above - Individual

Anonymous
Jane P. Batten
Frank and Aimee Batten, Jr.
Joan Brock
Louis F. and Prudence H. Ryan

\$100,000 - \$499,999 - Organizations

Alison J. & Ella W. Parsons Fund of the Hampton Roads Community Foundation
Barbara Upton Wilson Charitable Fund of the Hampton Roads Community Foundation
Bradley Family Fund of the Hampton Roads Community Foundation
Hampton Roads Community Foundation
HRSD
NOAA Chesapeake Bay Office
S.L. Nusbaum Realty Co.

\$100,000 - \$499,999 - Individuals

Richard and Carolyn Barry
Stephen Leaman
Richard and Shaune Meredith, Sr.
Chuck and Jean Townsend

\$50,000-\$99,999 - Organizations

Birdsong Peanuts
The Blocker Foundation
Columbia Gas of Virginia, Inc.
Mary Morton Parsons Foundation
Norfolk Southern Foundation
PRA Group
Virginia Natural Gas Foundation

\$50,000-99,999 - Individuals

Kay Abiouness
David and Helen Bernd
Matthew and Karen Fine
W. Sheppard Miller and Georginia R. Miller
Penny and Peter Meredith
Chris and Chris Neikirk
Cynthia Faschini and Andrew Wallach

\$25,000-49,999 - Organizations

Dollar Tree Stores, Inc.
Sentara Health
Virginia Institute of Marine Science
Wells Fargo Foundation

\$25,000-49,999 - Individuals

David and Susan Goode
John and Betty Trinder

\$10,000-24,999 - Organizations

BAE Systems Norfolk Ship Repair
Bank of America
The Beazley Foundation, Inc.
Brown Advisory
Cox Communications
Eugene S. Field Family Fund

Propeller Club of the United States
Port of Norfolk
Richard S. Glasser Family Foundation
Robins Foundation
Shearwater Foundation, Inc.
TC Energy
University of Virginia
Virginia Environmental Endowment
Wetlands Watch

\$10,000-24,999 - Individuals

Dottie Ballard
Jane Bashara
Annette Field
Michael and Lori Glasser
Howard and Sandra Gordon
Conrad Hall
Josh and Jennifer Harris
Ron and Sally Hartman
Robert and Marjorie Mayfield Jackson
Mark and Michelle Warden
Wayne and Ashlin Wilbanks
Blair and Jane Wimbush

\$5,000-9,999 - Individuals

Drs. Joyce Neff and Robert Ake
Ed and Linda Bradley
R. Bruce and Lilly Bradley
J. Robert Bray
Gary and Deborah Bonnewell
Graham Covington
Joe and Janet Covington
Dr. Brian and Melissa Page Deutsch
Burr and Jennifer Henderson
Edward Inge
Alan Golluhue and Elizabeth Lane Killam
Michael and Andria P. McClellan
Johanna N. Perakes
Barbara McCready Parrish
Steve and Judy Perry
Cameron and Bria Robinett



Mummichog Circle

\$5,000-9,999 - Organizations

Commonwealth of Virginia Department of Conservation and Recreation
Enviva Port of Chesapeake
General Dynamics NASSCO-Norfolk
J.L. Camp Foundation, Inc.
Norfolk State University
Norfolk Tug Company
Rivers Portsmouth Gaming LLC
Tidewater Children's Foundation
Virginia Pilot Association

\$2,500-4,999 - Individuals

Deborah Butler
Tom and Allison Cholis
Frank and Susan Daniel
Frances and Jim Dille
Joanna Fowler
Christina Goode
Martha Goode
Herb and Mary Haneman
Greg and Janet Kim
Ray and Kathy King
Mike and Carolyn Kirsch
Mia Lefkowitz Robinson
Hon. Delceno Miles

Kevin Murphy
Pat McLaughlin and Pat Murphy
Josh and Karen Priest
C. Wood and Ellen Selig
Julia Tye
Mary Vaughan
Dr. Theresa and Roderick Whibley
Matthew and Jessica Whitehead
Mr. and Mrs. Carlisle M. Wroton



River Otter Circle

\$1,500-4,999 - Organizations

Buckeye Partners, L.P.
David R. Goode Trust
Dewberry Engineering
Dwight and Jane Schaubach
Donor Advised Fund of the Suffolk Foundation
Giving Tuesday
Hampton Roads Shipping Association
Headwaters Resort PAC
K Plus Caulking and Waterproofing
Lawson Companies/the Retreat at Harbor Pointe
Legends of the Fly
Portsmouth Service League
Redwood Garden Club
Southern Material Handling, Inc.
Virginia Maritime Association
Western Branch Diesel WM

\$1,000-2,499 - Individuals

Dr. Javaune Adams-Gaston
Drs. Joyce Neff and Robert Ake
Joan Atkinson
Brad J. and Babbi J. Bangel
RADM Charles J. and Susan Beers
Bruce and Sarah Bishop
Elizabeth Outland Branner
Elizabeth A. Brichter
Mary Brinkmeyer
Richard Brodie
Jeanne Burger
Curtis Burson
Susan Castaneda
David and Missy Clark
Hon. Judge Jack and Kirk Clarkson
Norman and Susan Colpitts
Charles and Bettie Minette Cooper
W. Claiborne and Linda Coupland
Georg and Kay Dahl
Hon. Courtney Doyle
John and Janet Ellis
Paul and Linda English
Rodney Ferguson
Chip and Leslie Finch
Jeff and Diane Fine
Andrew and Kim Fink
Francesca Firek
Leslie H. Friedman
James and Anne Gildea
Howard and Sandra Gordon
Pam Boatwright and Don Gulliver
James Gwathmey
Henry and Eleanor Harris
Dr. Charles Hecht-Leavitt
Ted and Pam Henifin
Raymond and Betty Hicks
Gayle Hicks
Peter and Nancy Huber
Ellis W. and Klara M. James
Germaine Clair and Brooks Johnson

Thomas Johnson
Kenneth and Kathleen Kimball
VADM. Alexander and Barbara Krekich
Rowan, Oak and August Larson
Bob Layton
Allen and Ada Lester
Cary Lynch
Richard Mapp
John and Ruth Martin
David and Sharon McDonald
Ruth McElroy Amundsen
Colin and Patt McKinnon
Andy and Renee Merchant
Jeff Merritt
William and Joan Miller
Hon. Paula J. Miller
Grace Moran and Kurt Merkling
Capt. James T. and Mrs. Dorothy B. Morgan
Capt. Michael and Diann Nickelsburg
John and Anne Phillips
Walter and Barbara Priest
Katherine Reader
Kathleen Redfern
Scott and Ann Rhodes
F. Scott and Michele Ripley
Ron Hartshorn and Nancy Ronald
Wanda Russo
John Sarcone
Dr. Maynard and Kathryn Schaus
Jeannette Seagraves
Jack and Betty Shannon
Dr. Sharon Sheffield
Andrew and Traci Shepard
Conrad Shumadine
Frank and Cecilia Stanfield
Quinn and Allison Stanley
Phil and Sarah Stedfast
Drs. Gordon and Kerri Stokes
James Taylor
Patrick and Martha Thrasher
Virginia Thumm
John and Cindy Tuttle
Thomas Tye
Phil and Mary Ann Walzer
Dudley Ware
Sam and Jane Webster
David and Cathy White
Steven Wicks
Ken and Nancy Wren
Geoff and Laura Wright
John and Katherine Wynne

\$500-\$999 - Individuals

Brian Ballard
William Wolf and Bonnie Brooks
Harvey and Donna Bryant
Don and Susan Comer
Robert Daniel
Karen Dobson
J. Gregory and Amy Dodd
Valerie Downes
James and Katherine Estes
Jeff and Diane Fine
Ronald and Sue Fritz
Matthew Germand
Sharon Harrell
Bernard and Rebecca Herman
Gordon Holley
Mike and Pat Host
Capt. Lawrence I'Anson
Gail Juren
Pam and Byron Kloeppel
James Lang
Barbara and Gary Laws
Dr. Edward Lilly
Robert Loomis
Keith and Denise Maples
Anne and David McCollough
Wendy McGrady
Samantha and Bryan Miller
Elizabeth Milligan
RADM Ray and Jamie Moses
Jimmy Mullis
Richard and Susie Reynolds
Rodney Riddle
K.C. Filippino and Joe Rieger
Hon. John and Carol Rowe
Barbara Sasser
Jason Simpson
Louise and Kevin Slaters
Rick Hood and Sharon Smith
Emily Studebaker
Douglas Taphouse
Diane Torrech
John and Cindy Tuttle
John Tynch
Michael Unger
Drs. Larry and Jackie White
Jenny Willcox
Annelies Winborne
Thomas St. Andre and Sandra Winstead



Oyster Circle

\$500 - \$999 Organizations

Atlantic Dominion Distributors
Coastal Services
Lake Smith Terrace Garden Club
Smartmouth Brewing Company
Westside Produce & Provisions
Wicker's Crab Pot Seafood
Womeldorf Charitable Gift Fund

\$250-\$499 - Individuals

Sharon Q. Adams
Mary and Dabney Baker
Dr. Michael and Deborah Bohan
William Bunch
Richard and Lana Butler
Rev. Ellen and Ray Comstock
Peter Decker
Michael Disharoon
Nikole Dunkley
Tim and Teri Duvall
Reid Ervin
Ben Feutz
Jane L. Fowler
Rhonda Frank
Richard and Debby Freeman
Edwin Gatewood



Seahorse Circle

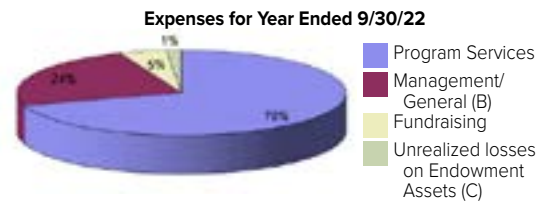
\$1,000-\$1,499 - Organizations

Accurate Marine Environmental, Inc.
American Legion Post 327
Bay Environmental
Clearfield MMG, Inc.
Coastal Virginia Unitarian
Universalists Friends
Elizabeth River Crossings
Give Local 757
Harbor Group Management Co., LLC
Norfolk Dredging Company
Portsmouth Boat Club
R.G. Electric Company, Inc.
The Port of Virginia
United Way SHR Combined Federal Campaign
USAA/Benevity
Walters Family Foundation
Wetland Studies and Solutions, Inc
Woods Rogers Vandeventer Black PLC

The Elizabeth River Project Statement of Activities

Fiscal Year Ending September 30, 2022

Unrestricted revenues and other support	
Grants and contributions	\$4,485,434
Contributed nonfinancial assets and services	\$53,026
Program income	\$141,371
Membership dues	\$75,512
Investment earnings	\$21,132
Other income	\$4,659
	\$4,781,134
Expenses	
Program services	\$2,202,527
Management and General	\$747,790
Fundraising	\$145,133
Unrealized losses on Endowment Assets (C)	\$47,331
	\$3,142,781
Change in net assets	\$1,638,353
Net assets - beginning of year	\$12,702,827
Net assets - end of year	\$14,341,180



Note A: Restricted and Unrestricted
 Note B: Includes construction management costs
 Note C: Market fluctuations

The Elizabeth River Project Statement of Financial Position

Fiscal Year Ending September 30, 2022

Current Assets	
Cash without donor restriction	\$1,145,661
Cash and cash equivalents with donor restriction	\$8,292,799
Contract receivables	\$109,975
Grant receivables	\$257,622
Promises to give - net	\$732,974
Other current assets	\$1,154
Total Current Assets	\$10,540,185
Property and Equipment - Net	\$2,735,228
Noncurrent Assets	
Noncurrent promises to give - net	\$1,407,511
Other non-current assets	\$4,995
Beneficial interest in assets held by others	\$769,950
Total Current Assets	\$15,457,869
Current Liabilities	
Accounts payable and accrued expenses	\$1,116,689
Total Liabilities	\$1,116,689
Net assets	
Without donor restrictions	\$389,677
Without donor restrictions, board designated	\$915,344
Without donor restrictions, invested in property and equipment	\$2,735,228
Total Net Assets without donor restrictions	\$4,040,249
With donor restrictions	\$10,300,931
Total Net Assets	\$14,341,180
Total Liabilities and Net Assets	\$15,457,869

\$250-\$499- Individuals (Cont'd)

Patricia Grinnan
 Barbara Grow
 Mary E. Grubb
 Randy Grubbs
 Owen Gwathmey
 Cathy Halliwell
 Louis Henry
 Patrick Herman
 Judith Homsher
 Nancy Jacobson
 Archer and Patricia Jones
 Joe and Jamie Kennedy
 Dr. Robert and Carol Laibstain

Matthew Lavin
 Nancy Levin
 Penny Lewis
 Anne Lynch Wilber
 Dr. Robert and Beverly Mann
 Bjorn Marshall
 S. Randall McDaniel
 Michael McPhillips
 Dr. Betty Meyer
 Dr. Julius Miller
 Jeff and Danielle Miskill
 Elisabeth Niccore
 Dr. Donald and Tessa Nuss
 Peter and Sarah Oberle

Deborah Otis
 Elizabeth Pampalone
 Myles A. Pocta
 Jennifer Raymond
 Dr. Sue Rieger
 David and Angela Savage
 Courtney Scruggs
 Harry and Frances Shock
 Kevin and Louise Slates
 Susan Smith
 Ruth M. Bizot and William H. Spaur
 Helmut and Mary Lou Speckheuer

Helen Spore
 Aurora Szoka
 Nancy and George Tatterson
 Kevin and Miriam Terry
 Nadia and Svindoor Toor
 Vivien Valentine
 Dr. Nancy Welch
 Rebecca White
 Twila Wilson
 Lauren and Eddie Wolcott
 Wayland W. Yoder

Ronald and Sue Fritz Green
 Pine Garden Club
 Rebecca Greenwald
 Rachel Greggs
 Bill Gregory
 James Gregory
 Bobbie Gribble
 Annie Groves
 Barbara Grow
 Stephen Grizanka
 Heather Guerette
 Robin Gustin
 Dr. A. R. and Sandra Guthrie
 Michael Guthrie
 William Guthrie
 Timothy Hackman
 Virginia and Barry Hackney
 Michelle Hagdom
 Mary Jane Hall
 Gerald Hallal
 Gerald Hallal
 Leslie Harrison and Patricia Boyce Halstead
 Luka Hamel-Serenity
 Debra J. Hanbury
 Deloris Haney
 Daniel Hankin
 Jennifer Hanner
 Allan Hanrahan
 Rick and Robin Hardee
 Tracy Hardee
 Carlton Hardy
 William S. Hargroves
 David Hartman
 Carla Hartsell
 Lisa Hartz
 Kelly Harvey
 Rodger Harvey
 Janet and Warren Hatfield
 Mark and Karen L. Hayes
 Mark and Ray Haywood
 Mary Hearing
 Beverly Heimbach
 Burr Henderson
 Lauren Henry
 Ned Henry
 Laurie Jo Hesson
 Anne Hester
 Rebecca Hill
 Sherry and Richard Hill
 Jesse Hines
 Alicia Hirsch
 Thomas Hirsch
 Tim and Janet Hixson
 Susan Hobbs
 Matt Hobson
 James Hogan
 Jim Holden
 Shelley Holliday
 Jay Hollowell
 Kimberly Honiball
 Wendie Hood
 Wayne Hooper
 Cassandra Howard
 Maury Howard
 Pat Howarth
 Shereen Hughes
 Lynette Hulse
 Lawrence Hultgren
 Thomas Hume
 Pamela Hunt
 Amy Hurd
 Meredith Hurd Robinson
 Ted Hurdle
 Julie Hurst
 Susan Huxter
 Cathleen Ireland
 Cathy Ireland
 Michelle Ivey
 Gail Iwans
 David Jackson
 Evan Jackson
 Marshall and Jean Jackson

Laura and Ronald Jacobson
 Patricia Jacobson
 Jill Jamison
 Casey Jayroe
 Richard Jeffers
 Bill and Kedron Jenkins
 Lisa Renee Jennings
 Marie Jensen
 Paul and Barbara Johnson
 PeggyAnn Johnston
 Claire Jones
 Cynthia Jones
 Julie Mackinlay
 James Joplin
 Staley Jordan
 Swopnil Joshi
 Craig Joy
 Steve Mallard
 Kathryn Malloy
 Gail Juren
 Joyce Jurkowski
 Naomi Kaminsky
 Joseph Kanipe
 Robert Kautter
 R Kevin Kearney
 Huib and Ankie Keizer
 Andrea and Jeff Kelleher
 Tanya Keller
 Dorothy Kello
 Tom Kennedy
 Paige Kersey Rigney
 Mehdi Khorrami
 Marjorie Kidd
 Marjorie and Robert Kidd
 Lisa Kilczewski
 Kathryn King
 Ray King
 Roger Knakal
 Lee Ellen Knight
 Janice Knighton
 Robert Knight
 Calvin Koonce
 Steven Kostrzewa
 Paul A. Kotarides
 Dave and Laura Koubsky
 Cameron and Matthew Kovarek
 David L. Kregger
 Jeffrey Kregger
 Beverly Kuehne
 Sebastian E. Kuhn
 Thomas Kuntz
 Suneeetha Kurra
 Daniel Laliberte
 Mike Lane
 Mr. and Mrs. W. Michael Lane
 Susan and James Lang
 Carsten Lange
 Larry LaPell
 Susan Larkin
 Anthony and Helen Larocco
 Helen LaRocco
 Maury Howard
 Tiffany Lavicoire
 Abigail LaVoie
 Kathy Lawless
 Nancy Lazaron
 Robert Leary
 Robyn, Declan, Molly and Patrick Leavy
 Cornelia B. Lee
 Judy Levin
 Jamie Lewis
 Elizabeth Lhost
 Diane and James Liedman
 Janet Lilley
 Jeanine Lindberg
 Grethe Lindemann
 Tammy Lindquist
 Elizabeth Lipsmeyer
 John and Mildred Little

Alana Litz
 Doretha Lloyd
 Karen and George Londeree
 Julia Dorsey and David Loomis
 Danita Lopes
 Alan Lott
 Becky Lowe
 Karen Luehrs
 Diana Lundquist
 Deborah Lupton
 Caroline Luzzatto
 Erin MacCord
 Summer Mace
 Julie Mackinlay
 Linda Mahoney
 Christopher Gay and Janice Gay Maker
 Eugene Maleski
 Charles and Nancy Nusbbaum
 William and Sharon Nusbbaum
 WendelNuzzo
 Dr. Mary Louise and Jim O'Brien
 Christina O'hrrogge
 Dr. William and Jimmie Old
 Stephanie Oldfield
 Miriam and Robert Palmer
 Ellen Papetti
 Tonya Parsons
 Louis and April Partida
 Larry Pasquinella
 Randolph K. Patterson
 Robert Pawl
 Vicki Payton
 Whitney S. Peace
 Pris M. Peake
 Linda Peck
 Tanya Pellegrino
 Linda Pellerin
 Andrea McGlynn
 Alice and Betty McGowen
 Maureen McGrath
 Stacie McGraw
 Lauren Pharr
 Peggy Pickford
 D. Randall Pierce
 Christopher and Kathryn Melhuish
 Jessica Pinsky
 Sarah and Bernard Pishko
 Telisa Pittman
 William Pope
 Ashley Possehl
 Margaret Powell
 Natalie Powell
 Eloise Shelton-Mayo
 Jon Powers
 Jon and Gail Powers
 Michael Poyner
 Robert Prescott
 Barbara Price
 William Prince
 Kathrynne and Todd Pringle
 Elizabeth M. Psimas
 Leash Sims
 Anna Monacchio
 Sunny Quasebarth
 Bill Quinn
 Keith Moore
 Michael Morgan
 Richard Moriarty
 Frank Kirsch and Robert Reali
 Glenwood and Cynthia Morris
 Cameron Morrison

Jim Morrison
 Kelly Morse
 Matthew Muller
 Helen Murphy
 Sheryl Murphy
 John Murray
 Janice Mykleby
 Harry Neblett
 Bettie Nelson
 Jennifer Nelson
 Raymond Newlon
 James and Geraldine Newsom
 Daniel Nichols
 Steve Jones
 Jane Nohava
 Paul Nolte
 Kevin and Kathleen Noonan
 Pam and Ralph Northam
 Charles and Nancy Nusbbaum
 William and Sharon Nusbbaum
 WendelNuzzo
 Dr. Mary Louise and Jim O'Brien
 Christina O'hrrogge
 Dr. William and Jimmie Old
 Stephanie Oldfield
 Miriam and Robert Palmer
 Ellen Papetti
 Tonya Parsons
 Louis and April Partida
 Larry Pasquinella
 Randolph K. Patterson
 Robert Pawl
 Vicki Payton
 Whitney S. Peace
 Pris M. Peake
 Linda Peck
 Tanya Pellegrino
 Linda Pellerin
 Andrea McGlynn
 Alice and Betty McGowen
 Maureen McGrath
 Stacie McGraw
 Lauren Pharr
 Peggy Pickford
 D. Randall Pierce
 Christopher and Kathryn Melhuish
 Jessica Pinsky
 Sarah and Bernard Pishko
 Telisa Pittman
 William Pope
 Ashley Possehl
 Margaret Powell
 Natalie Powell
 Eloise Shelton-Mayo
 Jon Powers
 Jon and Gail Powers
 Michael Poyner
 Robert Prescott
 Barbara Price
 William Prince
 Kathrynne and Todd Pringle
 Elizabeth M. Psimas
 Leash Sims
 Anna Monacchio
 Sunny Quasebarth
 Bill Quinn
 Keith Moore
 Michael Morgan
 Richard Moriarty
 Frank Kirsch and Robert Reali
 Glenwood and Cynthia Morris
 Cameron Morrison

Allan and Harriet Reynolds
 Karen and Doug Richards
 Michael Ricks
 Debra Ridenour
 Estelle Spradlin
 Kat Springston
 John Sproat
 Christine Stafford
 Theresa Stanton
 Kathleen and Steven Stasulis
 Morgan Stawski
 Reuben Rohn
 William Roman
 Arthur Rood
 Walter and Jo Anne Rooks
 Albert Roper
 Carol Rosenblatt
 Dr. John and Jane Rosenman
 Rogard Ross
 Laura Roth
 Catherine Rothman
 Christina Rohrgestein
 Rick Rowland
 Richard Strauss
 Gerald Streeter
 Ramie Strunc
 Christine and George Stubbs
 Heath Suarez
 Mr. and Mrs. David Sutelan
 Sharon Suttle
 Karen Sutton
 Cececia Sanford
 Barbara Ann Satmary
 Whitney and Ellen Saunders
 Jeff Sawyer
 Joshua Sawyer
 Madelyn Sawyer
 Brooke Schaab
 Aida Schimmel
 Jean Schimmel
 David Schleck
 Rachel Schmidt
 Susan Schrader
 Rebecca Schultheis
 Caitlin Scott
 Kathy Scott
 Sherry Scott
 James and Margaret Seagraves
 Eddie Seay
 Jessica Sechrist
 Carol Senechal
 Anja Serby-Wilkens
 Wayne Settle
 Gene and Dottie Seward
 Linda Shahan
 Randall Shannon
 Brenda Sharp
 Patti Shawn
 Edward Shea
 Dan and Barbara Shearer
 Paul Shearer
 Eloise Shelton-Mayo
 John Sherwood
 Daniel and Kyrie Shomaker
 Martha Shore
 Garnett Shore
 Audra Short
 Karen Shriver
 Jim Shumadine
 Rosanne M. Silvis
 Jeremy Venske
 Alan and Linda Vigneault
 Charles and Barbara Vogan
 Catherine Wadley
 Marcia Walck
 Andrew Wallach
 Mary Patricia Walsh
 John Walter
 Richard Warbold
 Torilus Ward

Susan Snow Burnett
 Cherrie Soloria
 CJ Spady
 Catrena Speller
 Estelle Spradlin
 Kat Springston
 John Sproat
 Christine Stafford
 Theresa Stanton
 Kathleen and Steven Stasulis
 Morgan Stawski
 Reuben Rohn
 William Roman
 Arthur Rood
 Walter and Jo Anne Rooks
 Albert Roper
 Carol Rosenblatt
 Dr. John and Jane Rosenman
 Rogard Ross
 Laura Roth
 Catherine Rothman
 Christina Rohrgestein
 Rick Rowland
 Richard Strauss
 Gerald Streeter
 Ramie Strunc
 Christine and George Stubbs
 Heath Suarez
 Mr. and Mrs. David Sutelan
 Sharon Suttle
 Karen Sutton
 Cececia Sanford
 Barbara Ann Satmary
 Whitney and Ellen Saunders
 Jeff Sawyer
 Joshua Sawyer
 Madelyn Sawyer
 Brooke Schaab
 Aida Schimmel
 Jean Schimmel
 David Schleck
 Rachel Schmidt
 Susan Schrader
 Rebecca Schultheis
 Caitlin Scott
 Kathy Scott
 Sherry Scott
 James and Margaret Seagraves
 Eddie Seay
 Jessica Sechrist
 Carol Senechal
 Anja Serby-Wilkens
 Wayne Settle
 Gene and Dottie Seward
 Linda Shahan
 Randall Shannon
 Brenda Sharp
 Patti Shawn
 Edward Shea
 Dan and Barbara Shearer
 Paul Shearer
 Eloise Shelton-Mayo
 John Sherwood
 Daniel and Kyrie Shomaker
 Martha Shore
 Garnett Shore
 Audra Short
 Karen Shriver
 Jim Shumadine
 Rosanne M. Silvis
 Jeremy Venske
 Alan and Linda Vigneault
 Charles and Barbara Vogan
 Catherine Wadley
 Marcia Walck
 Andrew Wallach
 Mary Patricia Walsh
 John Walter
 Richard Warbold
 Torilus Ward

Dr. J C Ware
 Carol Warren
 John Wass
 Connie Waterbury
 Audrey Webb
 Mindy Webb
 Beverly Weeks
 Shirley Weeks
 Jasmine Wehlye
 Charles Weigand
 Marshall and Barbara Weissberger
 Ed and Judy Welp
 Leah Wetherill
 Lisa Wharton
 Edward Wheaton
 Colin White
 Henry White
 Mary Anna White
 Paul White
 Phillip White
 Annie Lu White-Guertin
 Shirley Whitehurst
 Charlie Whitestone
 Jayne Whitney
 Ray Wicker
 Steve Wilcox
 Charlotte Wilkes
 William and Barbara Willey
 Bob Williams
 David and Cathy Williams
 Patrick Williams
 Robert Williams
 Robert Williams
 Schwanzetta Williams
 Nicole Willock
 Annelies Winborne
 Pearl Windle-Drumwright
 Capt. and Mrs. Michael Winslow
 Stephen and Laura Witkowski
 Eileen Woll
 Jean Woodward
 Thomas Worrell
 Mr. Thurman Worthington
 Dr. Charles and Annie Wright
 Edith Wright
 Carolyn Wyatt
 Anna H. Yarashus
 Shannon Yerabek
 Richard Yoder
 Cinda and Lenny Zacks
 Erin Zarate
 Michelle Zielinski

In Kind Gifts

Received between May 1, 2023 and March 15, 2024

BAE Systems Norfolk Ship Repair
 Bay Environmental Inc
 Davis Ad Agency
 Doody/Calls of Hampton Roads
 EcoGardens 757
 Elation Brewing
 Elizabeth River Garden Club
 FORVIS
 HRSD
 Immanuel Presbyterian Church
 Inside Business, The Hampton Roads Business Journal
 Lady Fern's Native Plants
 Norfolk State University
 Institute for Coastal Adaptation and Resilience
 Robbins Maritime
 Skanska
 Smartmouth Brewing Co.
 Starving Artist Cafe
 Stromberg/Garrigan & Associates, Inc.
 Work Program Architects: WPA

Special Tribute Gifts

Honorariums

Robert Loomis in honor of **David and Julia Dorsey Loomis**
 Tammy Lindquist in honor of **Ashley Gudknecht**
 David Connito in honor of **Austin Connito**
 Mr. Thurman Worthington in honor of **BB Schenk's Birthday**
 Thomas Baker in honor of **Christa Sandner Folkes**
 Denise Tinkham in honor of **Clay Tinkham**
 Sherry and Richard Hill in honor of **Dr. Rick Strauss**
 John Sproat in honor of **FMCA Elizabeth River Going Strong**
 Jae Daniel in honor of **Frank Daniel**
 Alison Fechino in honor of **Jessica Robinson**
 Cathy Halliwell in honor of **Jimmy Entas and Volunteers**
 Martha Fortson in honor of **Judy Perry**

Patricia Truett in honor of **Judy Small**
 Matt Hobson in honor of **Judy Small**
 Tracey Trimyer in honor of **Kathy O'Loughlin**
 Jeffrey and Diane Fine in honor of **Lloyd Taliaferro**
 Swopnil Joshi in honor of **Malina Joshi**
 Elizabeth Lhost in honor of **Marjorie Mayfield Jackson**
 Dr. and Mrs. A. R. and Sandra Guthrie in honor of **Mr. and Mrs. Ray Moses**
 Rebecca Hill in honor of **Noah and Hannah Hill**
 Connie Waterbury in honor of **Pam & Ralph Northam**
 Bill Quinn in honor of **Serbet Quinn**

Elisabeth Niccore in honor of **Susan Smith**
 Dr. and Mrs. Mary Louise and Jim O'Brien in honor of **the Centennial of the Virginia Academy of Science**
 Catherine Wadley in honor of **The Comstock Family**
 Alana Litz in honor of **The Hampton Roads Chapter of the American Payroll Association (HRAPA)**
 Maureen McGrath in honor of **their 46th Wedding Anniversary!**
 Tracy and Tami Burke in honor of **Tidewater Boat Club**
 Valerie Downes in honor of **Trish O'Kane**
 Aaron Goldmeier in honor of **Winnie Drew Goldmeier**

Memorials

Wendy Billue in memory of **Andrew J. Dewing**
Marian Bingaman in memory of **Andrew J. Dewing**
Pat and Mike Church in memory of **Andrew J. Dewing**
Susan and Kenneth Crone in memory of

Andrew J. Dewing

Heather Dacey in memory of **Carroll Forehand**
Pam Darwin in memory of **Andrew J. Dewing**
Taliaferro and Robert Denton in memory of

Andrew J. Dewing

Colleen and Tom Fitzgerald in memory of

Andrew J. Dewing

Regina Forehand in memory of **Andrew J. Dewing**
Rick and Robin Hardee in memory of **Andrew J. Dewing**
Tracy Hardee in memory of **Andrew J. Dewing**
Laurie Jo Hesson in memory of **Andrew J. Dewing**
Kimberly Honiball in memory of **Andrew J. Dewing**
Robyn, Declan, Molly and Patrick Leavy in memory of

Andrew J. Dewing

Caroline Luzzatto in memory of **Andrew J. Dewing**
Katherine Mazza in memory of **Andrew J. Dewing**
Caroline Mazza in memory of **Andrew J. Dewing**
Dennis McBride in memory of **Andrew J. Dewing**
Jeffrey Miller in memory of **Andrew J. Dewing**
Harry Neblett in memory of **Andrew J. Dewing**
Patrice Nelson in memory of **Andrew J. Dewing**

Ivy Ozmon in memory of **Albert "Jack" Ozmon Jr.**
Elizabeth M. Psimas in memory of **Andrew J. Dewing**

Estelle Spradlin in memory of **Andrew J. Dewing**
Virginia Stephens in memory of **Andrew J. Dewing**

Sharon Suttle in memory of **Andrew J. Dewing**
Robert Tuleya in memory of **Andrew J. Dewing**

Mindy Webb in memory of **Andrew J. Dewing**
James and Jennifer Doherty in memory of

Andrew J. Dewing

Thomas Baker in memory of **Anne F. Flanagan**
Janet Perry in memory of **Arlene G Perry**

Thomas Baker in memory of **Barbara Ann**
Crutsinger Wood

Mark & Ray Haywood in memory of **Bb Schenk**
Dr. Albert Roper in memory of **Bb Schenk**

Jamie Lewis in memory of **Bernice Weinstein**
Jesse Ray Eisenpress in memory of **Chrissy Rose**

Janet Marvel in memory of **Claire Beasley**
Josephia Bolgston in memory of **David G. &**

Patricia A. Schaffer

Katrina Venable in memory of **Dr Thomas Venable**
Cecelia Sanford in memory of **Elinor Eastman Weeks**
Beverly Weeks in memory of **Elinor Eastman Weeks**
James Garrison in memory of **Elizabeth Jane Garrison**
Frank Cantone in memory of **Frank W and**

Sarah Cantone

Walters Family Foundation in memory of **Gene and**
Juanita Walters

Pat McLaughlin and Pat Murphy in memory of
Grace A. McLaughlin

Virginia Barnett in memory of **Harriet Chapman Ervin**
Phillip Decker in memory of **Horace Manly Williams**

Debra Dyer in memory of **Horace Manly Williams**

Demi Elsasser Wheeler in memory of

Horace Manly Williams

Mark & Ray Haywood in memory of

Horace Manly Williams

Ned Henry in memory of **Horace Manly Williams**

Mike Lane in memory of **Horace Manly Williams**

Ms. Patricia McMichael in memory of

Horace Manly Williams

Jim Shumadine in memory of **Horace Manly Williams**

Nancy and George Tatterson in memory of

Horace Manly Williams

David and Cathy Williams in memory of

Horace Manly Williams

Michelle Zielinski in memory of **Horace Manly Williams**

Richard Brodie in memory of **Horace Manly Williams**

Mr. and Mrs. W. Claiborne and Linda Coupland in memory of

Horace Manly Williams

Linda Cross in memory of **Horace Williams**

Jeff Swartz in memory of **Isabelle Wills**

Chris Miller in memory of **Isabelle Wills**

Mr. and Mrs. Diana and Kenneth Bailey in memory of

Jefferey Holste

Janet and Warren Hatfield in memory of **Jefferey Holste**

Steve and Judy Perry in memory of **Jefferey Holste**

Dan and Barbara Shearer in memory of **Jefferey Holste**

Alice and Betty McGowen in memory of **Jefferey Holste**

Mrs. Keith and Denise Maples in memory of **Joe Ziemba**

Jane Bashara in memory of **John and Eleanor Marshall**

Steve Mallard in memory of **Judith Bliss Mallard**

Wendel Nuzzo in memory of **Lee Nuzzo**

Richard Brown in memory of **Lida Jane R Brown**

Bernard and Rebecca Herman in memory of

Lucy Spigel Herman

Stephen Leaman in memory of **Miss Gill Leaman**

Pam and Byron Kloeppel in memory of **Mitch Ash**
Mary Patricia Walsh in memory of **Neil P. Walsh**
Susan Stones in memory of **Randy Trivett**
Allan Hanrahan in memory of **Renee K. Hanrahan**
Meridith Hurd Robinson in memory of **Tyler Hurd**
Ed and Linda Bradley in memory of **William and**
Ruth Hoag

Mark & Ray Haywood in memory of **William Underwood**

Ryan Resilience Lab Outdoor Learning Stations

Julia Tye in honor of **Thomas and Christopher Tye, the next generation**

Josh and Karen Priest in honor of **Taylor and Blair Priest**

Ryan Resilience Lab Learning Park Plantings

Great Bridge Fisherman's Association in memory of
Walter "Walt" Jarrett

Great Bridge Fisherman's Association in memory of
Denny Dobbins

John Deuel in memory of **Eleanor Pearson**

Jessica Pinsky in memory of **Lawrence Mullen**

David Connito in honor of **Austin Connito**

Ellen Papetti in honor of **Luisa Black Ellis**

Susan M. Schrader in honor of

Marjorie Mayfield Jackson

Ryan Resilience Lab Boardwalk Plaques

Elizabeth Outland Branner in memory of
Margaret "Teancy" Matthews Outland

Elizabeth A. Richter in memory of **Richard L. DiPeppe**
Coastal Virginia Unitarian Universalists Friend in memory of

Claire Beasley

Cynthia Crawford in memory of **Stanley E. Crawford**

Missy & David Clark in memory of **Philip Flanigan**

John Deuel in memory of **Eleanor Pearson**

Elizabeth River Project in memory of **Jeffery E. Holste**

Susan Hume in memory of **J. Robert Hume III**

Scott and Ann Rhodes in memory of **Jon Robert Tabb**

Dr. Sue Rieger in memory of **Vivian Adkins**

Matthew and Karen Fine in honor of **Jeff, Diane,**

Jesse and Maya Fine

The Matthew and Jeff Fine Families in honor of **Andrew and**
Barbara Fine

How a small grant "launched the most successful river restoration... anywhere"



When **Gerald P. McCarthy** recently published a history of his decades as director of the Virginia Environmental Endowment, his publisher, the University of Virginia Press, asked for his favorite anecdote.

His reply: "The Elizabeth River Project. How a small grant of \$1,375, made 30 years ago, launched what is now the most successful river restoration project in Virginia, and perhaps anywhere."

Order Jerry's book, *Blueprint for Going Green*, from upress.virginia.edu.

And consider following in Jerry's footsteps. Give to the Elizabeth River Project for more restoration success.

Questions? *Susan Smith*,
ssmith@elizabethriver.org,
757-399-7487, c 757-407-1406.



Calling River Star Businesses! Document now for 2025 recognition

The Elizabeth River Project is now proud to call 164 businesses, government facilities and other organizations our "River Star Businesses." As of 2024, you've documented reducing pollution voluntarily by 374 million pounds, while conserving thousands of acres of wildlife habitat.

We think that's beautiful. A special shout out to Chesapeake Parks, Recreation and Tourism, winner Inside Business River Star

Hall of Fame at this year's recognition banquet, as well as Elizabeth River Crossings and Norfolk Office of Resilience, advancing to "three-star" or Model Level.

Program participants, start documenting this year's results now for peer review this fall. To find out if River Star Businesses is right for you, *contact Pam Boatwright*, pboatwright@elizabethriver.org, or visit Riverstarbusinesses.org.



The City of Chesapeake is in our Hall of Fame for conserving no less than 80 parks, including 90 acres of waterfront forest for the new Newton Neck Park.