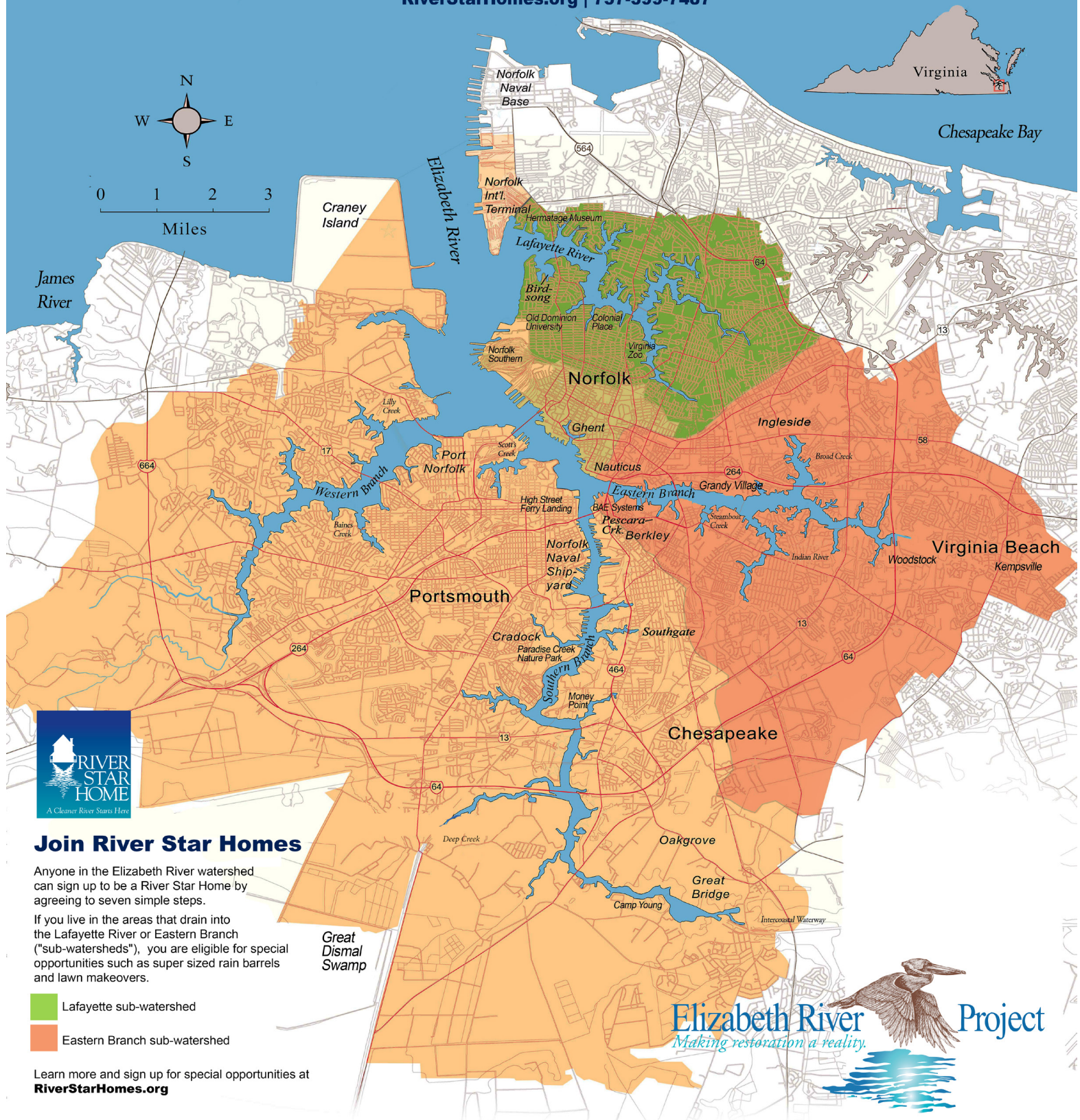


The Elizabeth River Watershed

A "watershed" is the area that drains into a river when it rains. If you live in the Elizabeth River watershed, rain water runs off your lawn and street, then into storm drains and then the Elizabeth River. Along the way, this runoff becomes a toxic soup of fertilizers, pesticides, oil and grease - unless you do your part! Find out how:

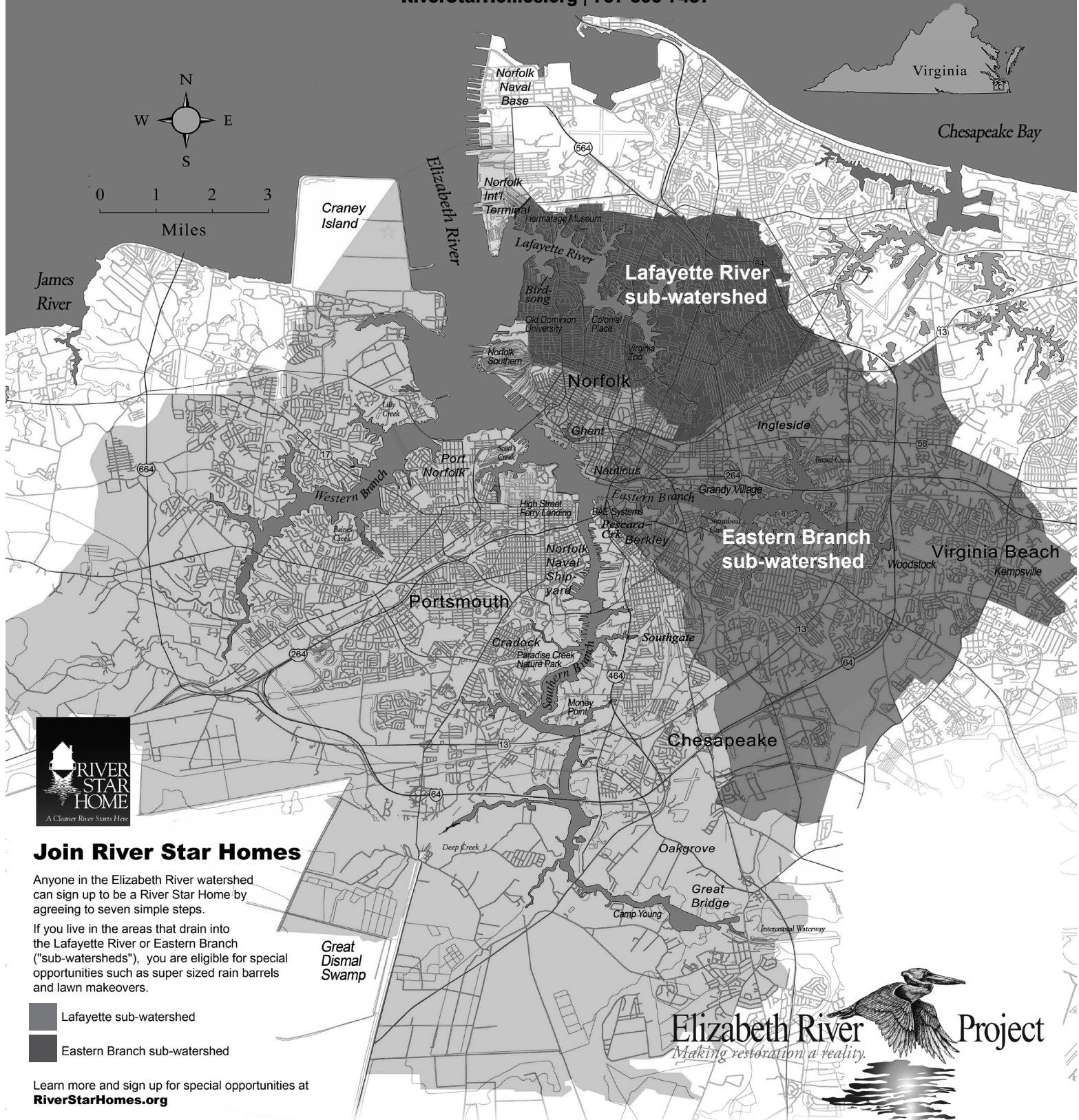
RiverStarHomes.org | 757-399-7487



The Elizabeth River Watershed

A "watershed" is the area that drains into a river when it rains. If you live in the Elizabeth River watershed, rain water runs off your lawn and street, then into storm drains and then the Elizabeth River. Along the way, this runoff becomes a toxic soup of fertilizers, pesticides, oil and grease - unless you do your part! Find out how:

RiverStarHomes.org | 757-399-7487



Join River Star Homes

Anyone in the Elizabeth River watershed can sign up to be a River Star Home by agreeing to seven simple steps.

If you live in the areas that drain into the Lafayette River or Eastern Branch ("sub-watersheds"), you are eligible for special opportunities such as super sized rain barrels and lawn makeovers.

- Lafayette sub-watershed
- Eastern Branch sub-watershed

Learn more and sign up for special opportunities at **RiverStarHomes.org**

Elizabeth River Project
Making restoration a reality.

